

West Saanich Rd between Interurban Rd and Old West Saanich Rd

April 01, 2019 To April 05, 2019



The data presented here is for information purposes only and should not be considered authoritative for construction, geotechnical, engineering, navigational, legal, or other site-specific uses. The information shared is owned by the Transportation Division of the Engineering Department at the District of Saanich. Accuracy is not guaranteed.

Start Date: 1-Apr-19
 Start Time: 0:00
 Station ID: M0040-11

Location 1: West Saanich Rd between Interurban Rd and Old West Saanich Rd

Note: Interurban Rd and Old West Saanich Rd

DATE:	April 1, 2019		April 2, 2019		April 3, 2019		April 4, 2019		April 5, 2019		WK AVG		WK AVG	HOURLY
	MON		TUE		WED		THURS		FRI				CH 1+2	%
Time:	NB	SB	NB	SB	NB	SB	NB	SB	NB	SB	NB	SB		
12-1 AM			11	3	13	5	10	3			11	4	15	0.1%
1-2 AM			7	5	5	2	2	5			5	4	9	0.1%
2-3 AM			2	2	4	2	2	5			3	3	6	0.1%
3-4 AM			5	8	2	5	2	4			3	6	9	0.1%
4-5 AM			7	12	11	13	12	12			10	12	22	0.2%
5-6 AM			30	60	26	56	26	57			27	58	85	0.8%
6-7 AM			104	222	98	212	109	220			104	218	322	3.2%
7-8 AM			213	491	198	456	197	498			203	482	684	6.8%
8-9 AM			300	543	282	542	315	532			299	539	838	8.4%
9-10 AM			312	330	276	364	276	339			288	344	632	6.3%
10-11 AM			303	311	278	300	239	300			273	304	577	5.8%
11-12 PM			313	334	281	320	323	312			306	322	628	6.3%
12-1 PM			312	336	296	329	322	333			310	333	643	6.4%
1-2 PM			347	326	332	304	292	315			324	315	639	6.4%
2-3 PM			367	322	375	323	394	350			379	332	710	7.1%
3-4 PM			411	449	431	383	503	433			448	422	870	8.7%
4-5 PM			599	393	584	382	677	397			620	391	1011	10.1%
5-6 PM			579	305	519	318	568	351			555	325	880	8.8%
6-7 PM			279	231	279	210	288	217			282	219	501	5.0%
7-8 PM			201	171	185	152	202	212			196	178	374	3.7%
8-9 PM			161	100	116	92	156	137			144	110	254	2.5%
9-10 PM			121	43	96	75	128	88			115	69	184	1.8%
10-11 PM			65	33	61	16	70	33			65	27	93	0.9%
11-12 AM			21	4	26	6	19	14			22	8	30	0.3%
LANES			5070	5034	4774	4867	5132	5167			4992	5023	10015	100.0%
TOTAL			10104		9641		10299				10020			
	MON		TUE		WED		THURS		FRI		WK AVG			

PEAK HOUR					TOTAL VEHICALS-PEAK PERIODS		2 HOUR PEAK INTERVALS							
MAX. 7 - 9 am PEAK HOUR	838	⇒	8.4%	between	8-9 AM	4683	⇒	6 HR TOTAL		2 HR AM (7 - 9 AM)				
MAX. 7 - 11 am PEAK HOUR	838	⇒	8.4%	between	8-9 AM	3413	⇒	4 HR TOTAL		VEH / HR	VEH / 2HR	2 HR %		
MAX. 11 am - 1 pm PEAK HOUR	643	⇒	6.4%	between	12-1 PM					7-8 AM	684	1522	15.2%	
MAX. 11 am - 3 pm PEAK HOUR	710	⇒	7.1%	between	2-3 PM					8-9 AM	838			
MAX. 4 - 6 pm PEAK HOUR	1011	⇒	10.1%	between	4-5 PM			24 HOUR FACTORS		2 HR NOON (11 - 1 PM)				
MAX. 3 - 6 pm PEAK HOUR	1011	⇒	10.1%	between	4-5 PM			2.14	⇒	6-24 HR FACT.	VEH / HR	VEH / 2HR	2 HR %	
								2.93	⇒	4-24 HR FACT.	11-12 PM	628	1270	12.7%
											12-1 PM	643		
											2 HR PM (4 - 6 PM)			
											VEH / HR	VEH / 2HR	2 HR %	
											4-5 PM	1011	1891	18.9%
											5-6 PM	880		

West Saanich Rd between Interurban Rd and Old West Saanich Rd

Northbound

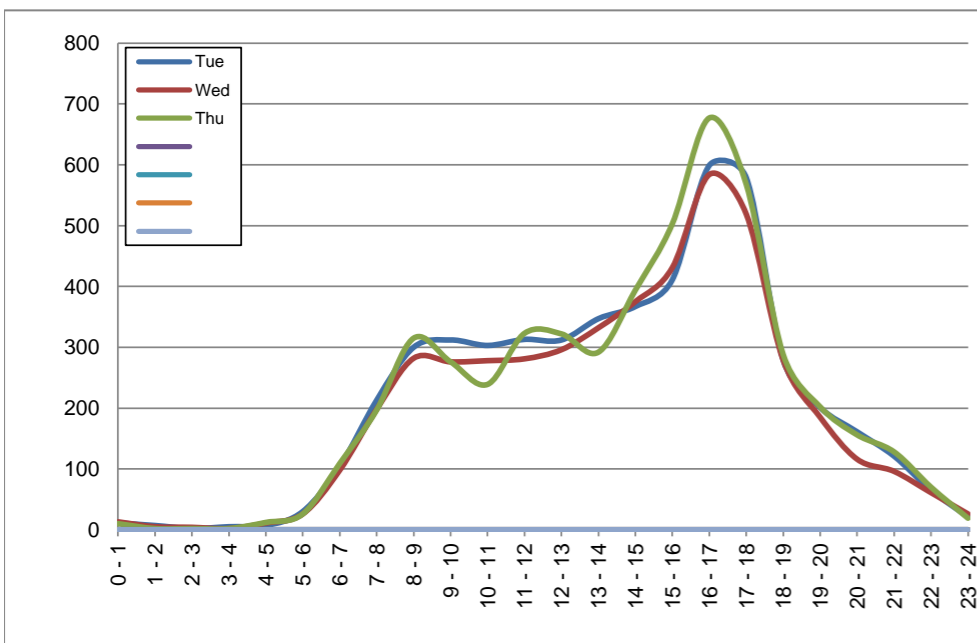
April 2, 2019 to April 4, 2019

Hourly Volumes

Time Period	Tue	Wed	Thu			
	Apr 2	Apr 3	Apr 4			
0 - 1	11	13	10			
1 - 2	7	5	2			
2 - 3	2	4	2			
3 - 4	5	2	2			
4 - 5	7	11	12			
5 - 6	30	26	26			
6 - 7	104	98	109			
7 - 8	213	198	197			
8 - 9	300	282	315			
9 - 10	312	276	276			
10 - 11	303	278	239			
11 - 12	313	281	323			
12 - 13	312	296	322			
13 - 14	347	332	292			
14 - 15	367	375	394			
15 - 16	411	431	503			
16 - 17	599	584	677			
17 - 18	579	519	568			
18 - 19	279	279	288			
19 - 20	201	185	202			
20 - 21	161	116	156			
21 - 22	121	96	128			
22 - 23	65	61	70			
23 - 24	21	26	19			
Day Total	5070	4774	5132			

15-Minute Volumes

Time Start	Tue	Wed	Thu				Time Start	Tue	Wed	Thu			
	Apr 2	Apr 3	Apr 4					Apr 2	Apr 3	Apr 4			
0:00	4	6	2				12:00	75	75	90			
0:15	5	4	7				12:15	88	81	82			
0:30	1	1	1				12:30	77	73	69			
0:45	1	2	0				12:45	72	67	81			
1:00	1	1	0				13:00	95	79	65			
1:15	3	1	1				13:15	86	80	89			
1:30	2	2	0				13:30	86	90	62			
1:45	1	1	1				13:45	80	83	76			
2:00	0	1	0				14:00	77	79	95			
2:15	1	1	0				14:15	86	90	119			
2:30	0	0	1				14:30	91	110	84			
2:45	1	2	1				14:45	113	96	96			
3:00	1	0	0				15:00	92	92	105			
3:15	1	0	0				15:15	93	119	127			
3:30	2	1	2				15:30	113	108	118			
3:45	1	1	0				15:45	113	112	153			
4:00	1	1	1				16:00	136	135	178			
4:15	4	5	4				16:15	164	142	164			
4:30	0	1	3				16:30	157	157	168			
4:45	2	4	4				16:45	142	150	167			
5:00	6	5	9				17:00	144	141	145			
5:15	4	4	7				17:15	149	131	161			
5:30	7	4	3				17:30	153	139	144			
5:45	13	13	7				17:45	133	108	118			
6:00	10	10	12				18:00	93	73	83			
6:15	20	20	22				18:15	74	93	75			
6:30	33	33	46				18:30	63	63	78			
6:45	41	35	29				18:45	49	50	52			
7:00	36	33	29				19:00	53	59	67			
7:15	50	37	43				19:15	53	45	56			
7:30	63	60	62				19:30	50	51	50			
7:45	64	68	63				19:45	45	30	29			
8:00	62	44	69				20:00	50	34	36			
8:15	86	78	67				20:15	40	30	58			
8:30	81	83	85				20:30	35	31	42			
8:45	71	77	94				20:45	36	21	20			
9:00	92	88	73				21:00	32	32	31			
9:15	69	65	62				21:15	37	15	32			
9:30	71	66	66				21:30	32	28	33			
9:45	80	57	75				21:45	20	21	32			
10:00	77	83	65				22:00	22	22	22			
10:15	64	74	62				22:15	21	17	26			
10:30	77	61	51				22:30	12	11	14			
10:45	85	60	61				22:45	10	11	8			
11:00	73	55	93				23:00	11	13	8			
11:15	72	74	77				23:15	2	7	4			
11:30	88	80	81				23:30	4	3	5			
11:45	80	72	72				23:45	4	3	2			



Site notes:

West Saanich Rd between Interurban Rd and Old West Saanich Rd

Southbound

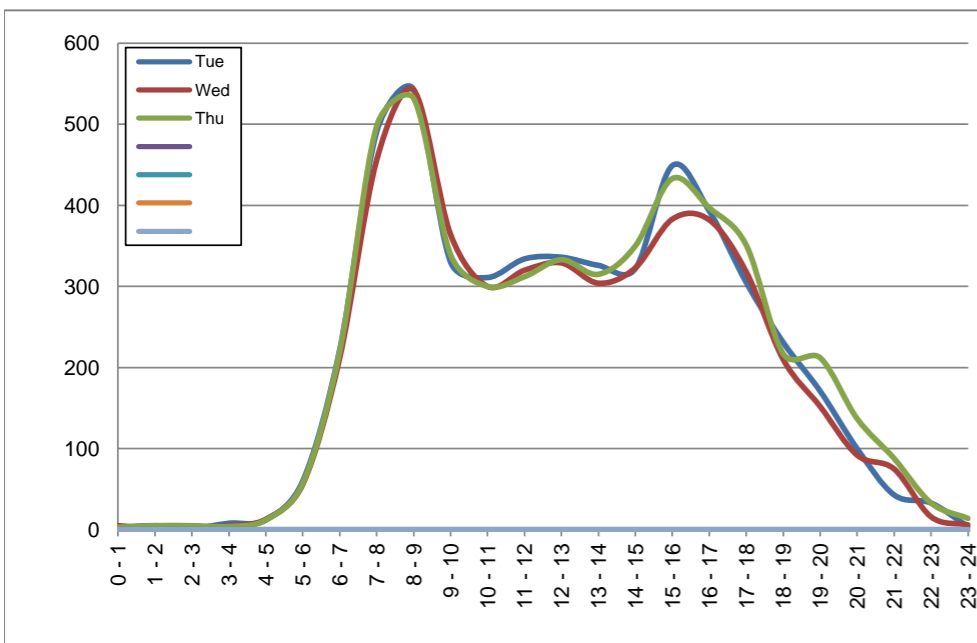
April 2, 2019 to April 4, 2019

Hourly Volumes

Time Period	Tue	Wed	Thu				
	Apr 2	Apr 3	Apr 4				
0 - 1	3	5	3				
1 - 2	5	2	5				
2 - 3	2	2	5				
3 - 4	8	5	4				
4 - 5	12	13	12				
5 - 6	60	56	57				
6 - 7	222	212	220				
7 - 8	491	456	498				
8 - 9	543	542	532				
9 - 10	330	364	339				
10 - 11	311	300	300				
11 - 12	334	320	312				
12 - 13	336	329	333				
13 - 14	326	304	315				
14 - 15	322	323	350				
15 - 16	449	383	433				
16 - 17	393	382	397				
17 - 18	305	318	351				
18 - 19	231	210	217				
19 - 20	171	152	212				
20 - 21	100	92	137				
21 - 22	43	75	88				
22 - 23	33	16	33				
23 - 24	4	6	14				
Day Total	5034	4867	5167				

15-Minute Volumes

Time Start	Tue	Wed	Thu				
	Apr 2	Apr 3	Apr 4				
0:00	0	1	0				
0:15	2	1	3				
0:30	1	2	0				
0:45	0	1	0				
1:00	1	0	2				
1:15	1	0	0				
1:30	3	1	2				
1:45	0	1	1				
2:00	0	2	1				
2:15	1	0	1				
2:30	1	0	2				
2:45	0	0	1				
3:00	1	0	1				
3:15	2	0	0				
3:30	2	5	2				
3:45	3	0	1				
4:00	1	1	3				
4:15	4	2	2				
4:30	2	6	5				
4:45	5	4	2				
5:00	3	4	6				
5:15	11	9	10				
5:30	21	19	16				
5:45	25	24	25				
6:00	25	31	34				
6:15	46	49	40				
6:30	70	58	79				
6:45	81	74	67				
7:00	91	89	90				
7:15	116	107	108				
7:30	131	101	132				
7:45	153	159	168				
8:00	143	136	136				
8:15	131	158	159				
8:30	155	137	132				
8:45	114	111	105				
9:00	90	94	89				
9:15	96	112	91				
9:30	81	84	94				
9:45	63	74	65				
10:00	84	80	81				
10:15	76	77	81				
10:30	88	75	81				
10:45	63	68	57				
11:00	86	71	76				
11:15	80	70	63				
11:30	80	95	81				
11:45	88	84	92				
12:00	74	69	90				
12:15	70	81	80				
12:30	103	86	77				
12:45	89	93	86				
13:00	73	70	76				
13:15	90	69	77				
13:30	81	83	83				
13:45	82	82	79				
14:00	83	87	78				
14:15	82	63	89				
14:30	70	81	76				
14:45	87	92	107				
15:00	135	106	112				
15:15	95	98	89				
15:30	107	89	108				
15:45	112	90	124				
16:00	89	84	92				
16:15	105	96	97				
16:30	97	97	94				
16:45	102	105	114				
17:00	95	101	115				
17:15	88	91	99				
17:30	69	67	76				
17:45	53	59	61				
18:00	63	60	67				
18:15	50	53	53				
18:30	63	49	49				
18:45	55	48	48				
19:00	48	39	63				
19:15	49	40	61				
19:30	39	34	39				
19:45	35	39	49				
20:00	27	33	35				
20:15	29	19	36				
20:30	24	19	37				
20:45	20	21	29				
21:00	16	30	21				
21:15	11	18	20				
21:30	7	20	31				
21:45	9	7	16				
22:00	10	6	13				
22:15	11	2	7				
22:30	7	4	7				
22:45	5	4	6				
23:00	1	3	5				
23:15	1	1	2				
23:30	1	2	5				
23:45	1	0	2				



Site notes:

Vehicle Speed Summary

Saanich Engineering Department

Count Id: M0040-11

Filename: West Saanich Rd between Interurban Rd and Old West Saanich Rd-Apr-2019.xlsm

Location: West Saanich Rd between Interurban Rd and Old West Saanich Rd

Note: Interurban Rd and Old West Saanich Rd

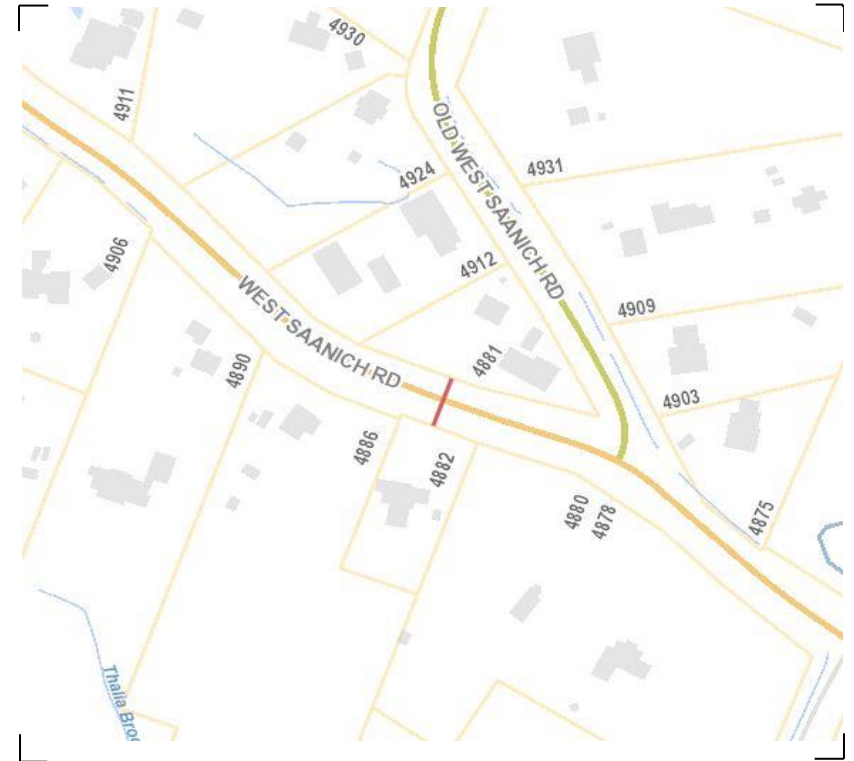
Direction: **North-South**

Dates: **April 01, 2019 To April 05, 2019**

Filtered data

AVG. SPEED	34 mph	54 km/h
50 % SPEED	34 mph	54 km/h
85 % SPEED	38 mph	60 km/h
95 % SPEED	40 mph	65 km/h

Location Map



West Saanich Rd between Interurban Rd and Old West Saanich Rd

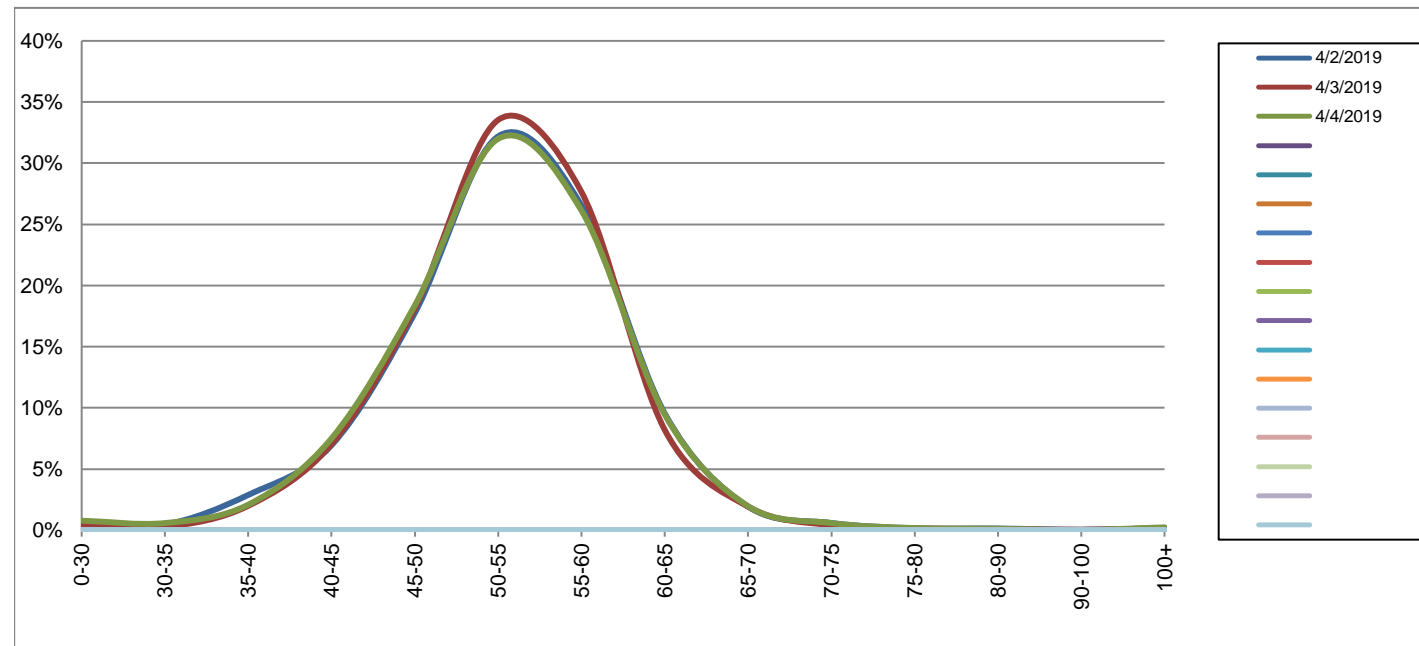
Northbound

April 2, 2019 to April 4, 2019

Daily Speed Bin Percentages															Daily Speed Bin Volumes														Total	Avg.
Bin #	1	2	3	4	5	6	7	8	9	10	11	12	13	14	1	2	3	4	5	6	7	8	9	10	11	12	13	14	Volume	Speed
Bin Speeds	0-30	30-35	35-40	40-45	45-50	50-55	55-60	60-65	65-70	70-75	75-80	80-90	90-100	100+	0-30	30-35	35-40	40-45	45-50	50-55	55-60	60-65	65-70	70-75	75-80	80-90	90-100	100+		
4/2/2019	0.6%	0.5%	2.9%	6.9%	17.8%	32.2%	26.5%	9.5%	1.9%	0.6%	0.2%	0.1%	0.0%	0.2%	32	24	146	352	900	1632	1346	484	98	30	8	7	2	9	5070	53
4/3/2019	0.4%	0.3%	2.0%	7.0%	18.1%	33.5%	27.6%	8.2%	1.9%	0.4%	0.1%	0.1%	0.0%	0.2%	20	13	95	336	865	1601	1320	391	92	19	7	5	2	8	4774	53
4/4/2019	0.8%	0.6%	2.1%	7.5%	18.4%	32.0%	26.1%	9.5%	2.0%	0.6%	0.2%	0.1%	0.0%	0.2%	40	30	107	385	943	1642	1341	485	101	30	9	6	1	12	5132	53
Total	0.6%	0.4%	2.3%	7.2%	18.1%	32.6%	26.8%	9.1%	1.9%	0.5%	0.2%	0.1%	0.0%	0.2%	92	67	348	1073	2708	4875	4007	1360	291	79	24	18	5	29	14976	53

Speed Data Summary

Bin #	1	2	3	4	5	6	7	8	9	10	11	12	13	14	Total
Bin Speeds	0-30	30-35	35-40	40-45	45-50	50-55	55-60	60-65	65-70	70-75	75-80	80-90	90-100	100+	
Survey Total	92	67	348	1073	2708	4875	4007	1360	291	79	24	18	5	29	14976
% Total	0.6%	0.4%	2.3%	7.2%	18.1%	32.6%	26.8%	9.1%	1.9%	0.5%	0.2%	0.1%	0.0%	0.2%	100%
Accumulated %	0.6%	1.1%	3.4%	10.6%	28.6%	61.2%	87.9%	97.0%	99.0%	99.5%	99.7%	99.8%	99.8%	100%	
Inverse Accum. %	99.4%	98.9%	96.6%	89.4%	71.4%	38.8%	12.1%	3.0%	1.0%	0.5%	0.3%	0.2%	0.2%	0.0%	
Average Speed	53 KM/H														



Site notes:

West Saanich Rd between Interurban Rd and Old West Saanich Rd

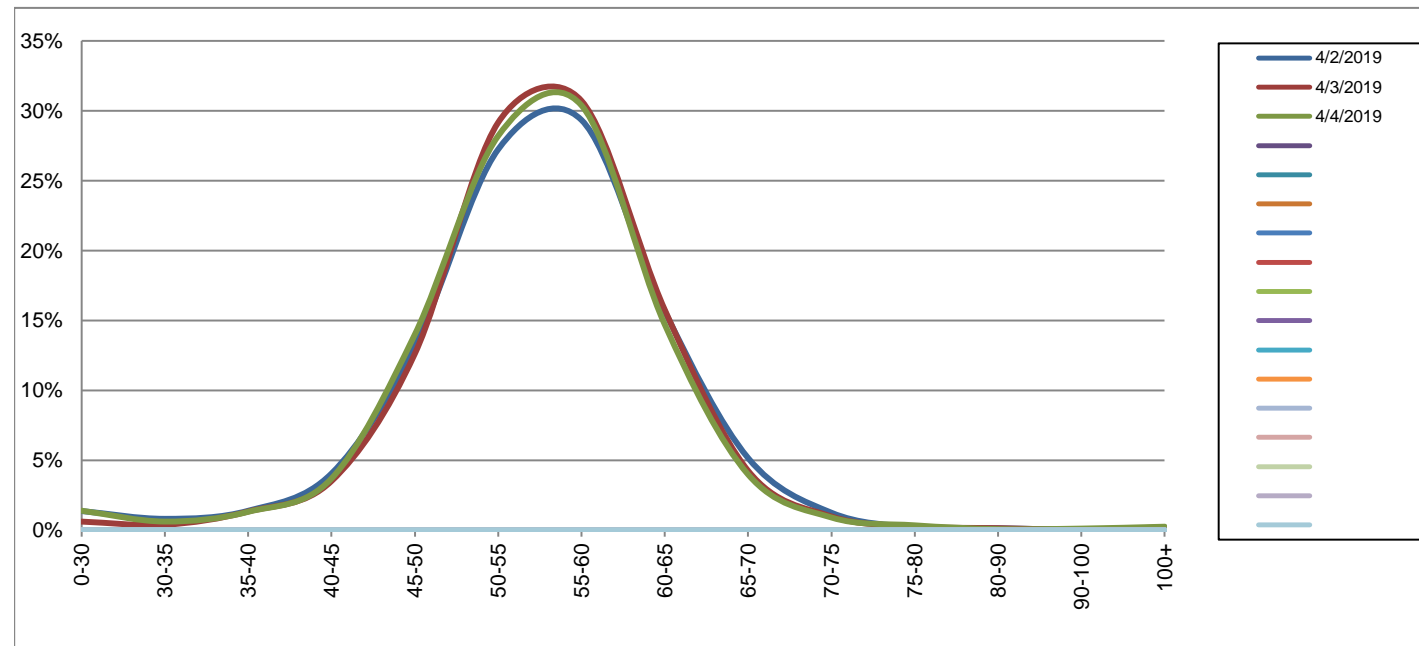
Southbound

April 2, 2019 to April 4, 2019

Daily Speed Bin Percentages														Daily Speed Bin Volumes														Total	Avg.	
Bin #	1	2	3	4	5	6	7	8	9	10	11	12	13	14	1	2	3	4	5	6	7	8	9	10	11	12	13	14	Volume	Speed
Bin Speeds	0-30	30-35	35-40	40-45	45-50	50-55	55-60	60-65	65-70	70-75	75-80	80-90	90-100	100+	0-30	30-35	35-40	40-45	45-50	50-55	55-60	60-65	65-70	70-75	75-80	80-90	90-100	100+		
4/2/2019	1.4%	0.8%	1.4%	4.1%	13.2%	27.2%	29.3%	15.7%	5.2%	1.3%	0.2%	0.1%	0.0%	0.2%	69	41	70	204	662	1371	1477	788	260	63	11	7	2	9	5034	55
4/3/2019	0.6%	0.4%	1.3%	3.5%	12.6%	29.2%	30.7%	15.8%	4.3%	1.0%	0.3%	0.1%	0.0%	0.2%	30	19	65	171	614	1419	1495	767	207	48	13	7	2	10	4867	55
4/4/2019	1.4%	0.6%	1.3%	3.7%	14.0%	28.2%	30.4%	14.7%	4.0%	0.9%	0.3%	0.1%	0.1%	0.3%	72	32	68	191	723	1457	1570	760	206	47	18	4	6	13	5167	55
Total	1.1%	0.6%	1.3%	3.8%	13.3%	28.2%	30.1%	15.4%	4.5%	1.0%	0.3%	0.1%	0.1%	0.2%	171	92	203	566	1999	4247	4542	2315	673	158	42	18	10	32	15068	55

Speed Data Summary

Bin #	1	2	3	4	5	6	7	8	9	10	11	12	13	14	Total
Bin Speeds	0-30	30-35	35-40	40-45	45-50	50-55	55-60	60-65	65-70	70-75	75-80	80-90	90-100	100+	
Survey Total	171	92	203	566	1999	4247	4542	2315	673	158	42	18	10	32	15068
% Total	1.1%	0.6%	1.3%	3.8%	13.3%	28.2%	30.1%	15.4%	4.5%	1.0%	0.3%	0.1%	0.1%	0.2%	100%
Accumulated %	1.1%	1.7%	3.1%	6.8%	20.1%	48.3%	78.4%	93.8%	98.3%	99.3%	99.6%	99.7%	99.8%	100%	
Inverse Accum. %	98.9%	98.3%	96.9%	93.2%	79.9%	51.7%	21.6%	6.2%	1.7%	0.7%	0.4%	0.3%	0.2%	0.0%	
Average Speed	55 KM/H														



Site notes:

West Saanich Rd between Interurban Rd and Old West Saanich Rd

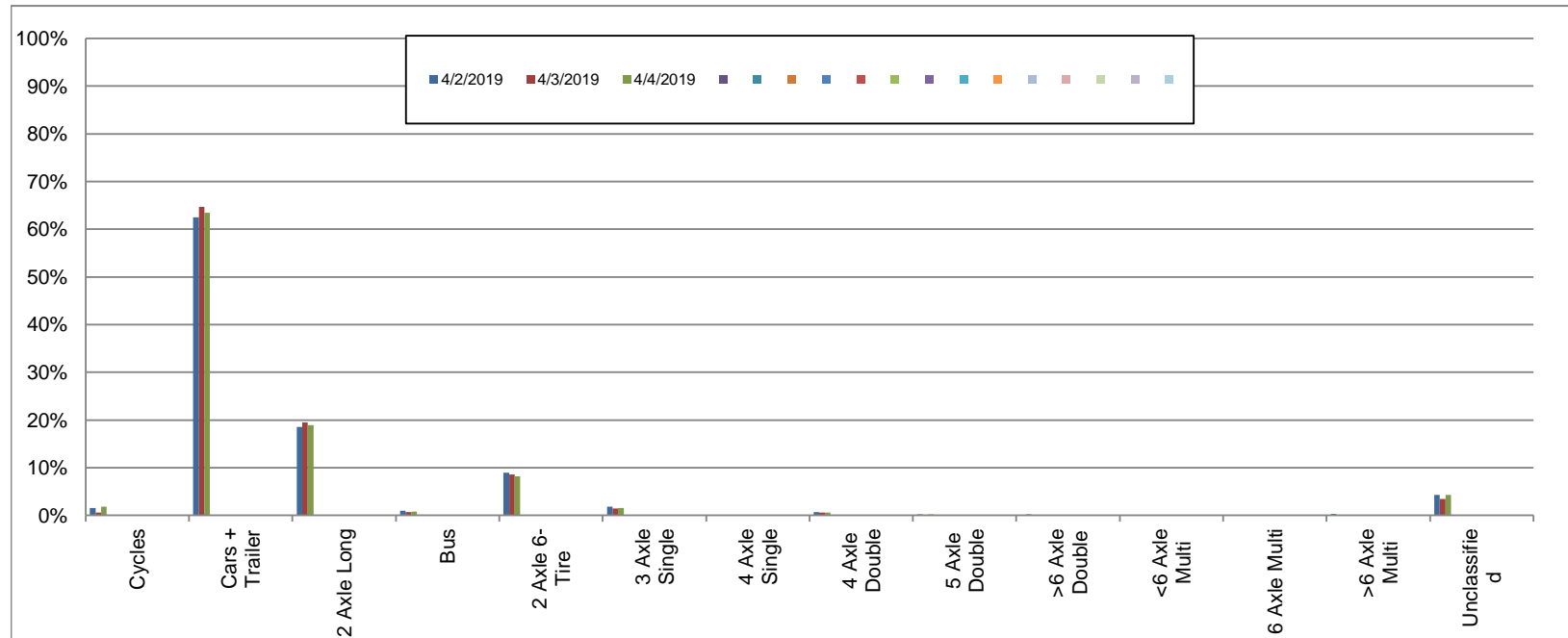
Northbound

April 2, 2019 to April 4, 2019

Daily Class Bin Percentages															Daily Class Bin Volumes														
Bin #	1	2	3	4	5	6	7	8	9	10	11	12	13	14	1	2	3	4	5	6	7	8	9	10	11	12	13	14	Total Volume
Bin Class	Cycles	Cars + Trailer	2 Axle Long	Bus	2 Axle 6-Tire	3 Axle Single	4 Axle Single	4 Axle Double	5 Axle Double	>6 Axle Double	<6 Axle Multi	6 Axle Multi	>6 Axle Multi	Unclassified	Cycles	Cars + Trailer	2 Axle Long	Bus	2 Axle 6-Tire	3 Axle Single	4 Axle Single	4 Axle Double	5 Axle Double	>6 Axle Double	<6 Axle Multi	6 Axle Multi	>6 Axle Multi	Unclassified	Total Volume
4/2/2019	1.6%	62.5%	18.5%	0.9%	8.9%	1.8%	0.1%	0.7%	0.2%	0.1%	0.0%	0.0%	0.3%	4.3%	80	3168	938	48	452	92	5	33	12	7	0	0	17	218	5070
4/3/2019	0.6%	64.7%	19.5%	0.7%	8.6%	1.4%	0.0%	0.6%	0.1%	0.2%	0.0%	0.0%	0.0%	3.5%	30	3089	932	34	409	69	1	30	5	9	0	0	0	166	4774
4/4/2019	1.8%	63.4%	19.0%	0.8%	8.2%	1.5%	0.0%	0.5%	0.2%	0.1%	0.0%	0.0%	0.1%	4.3%	93	3254	973	42	419	79	2	28	12	6	0	0	3	221	5132
Total	1.4%	63.5%	19.0%	0.8%	8.5%	1.6%	0.1%	0.6%	0.2%	0.1%	0.0%	0.0%	0.1%	4.0%	203	9511	2843	124	1280	240	8	91	29	22	0	0	20	605	14976

Class Data Summary

Bin #	1	2	3	4	5	6	7	8	9	10	11	12	13	14	Total Volume
Bin Class	Cycles	Cars + Trailer	2 Axle Long	Bus	2 Axle 6-Tire	3 Axle Single	4 Axle Single	4 Axle Double	5 Axle Double	>6 Axle Double	<6 Axle Multi	6 Axle Multi	>6 Axle Multi	Unclassified	Total Volume
Survey Total	203	9511	2843	124	1280	240	8	91	29	22	0	0	20	605	14976
% Total	1.4%	63.5%	19.0%	0.8%	8.5%	1.6%	0.1%	0.6%	0.2%	0.1%	0.0%	0.0%	0.1%	4.0%	100%
Accumulated %	1.4%	64.9%	83.8%	84.7%	93.2%	94.8%	94.9%	95.5%	95.7%	95.8%	95.8%	95.8%	96.0%	100.0%	
Inv. Accum. %	98.6%	35.1%	16.2%	15.3%	6.8%	5.2%	5.1%	4.5%	4.3%	4.2%	4.2%	4.0%	0.0%		



Classification Descriptions

Bin #	Bin Description
1	Motorcycles
2	Passenger cars, including those with recreational trailers
3	2-axle pick-ups, vans, and RVs, including those with recreational trailers
4	Buses
5	2-axle, 6-tire single units
6	3-axle single units
7	4-axle single units
8	3-axle or 4-axle double unit
9	5-axle double unit
10	6-, 7-, or 8-axle double unit
11	5-axle multiple unit
12	6-axle multiple unit
13	7-or-more-axle multiple unit
14	Vehicles that could not be classified

Site notes:

West Saanich Rd between Interurban Rd and Old West Saanich Rd

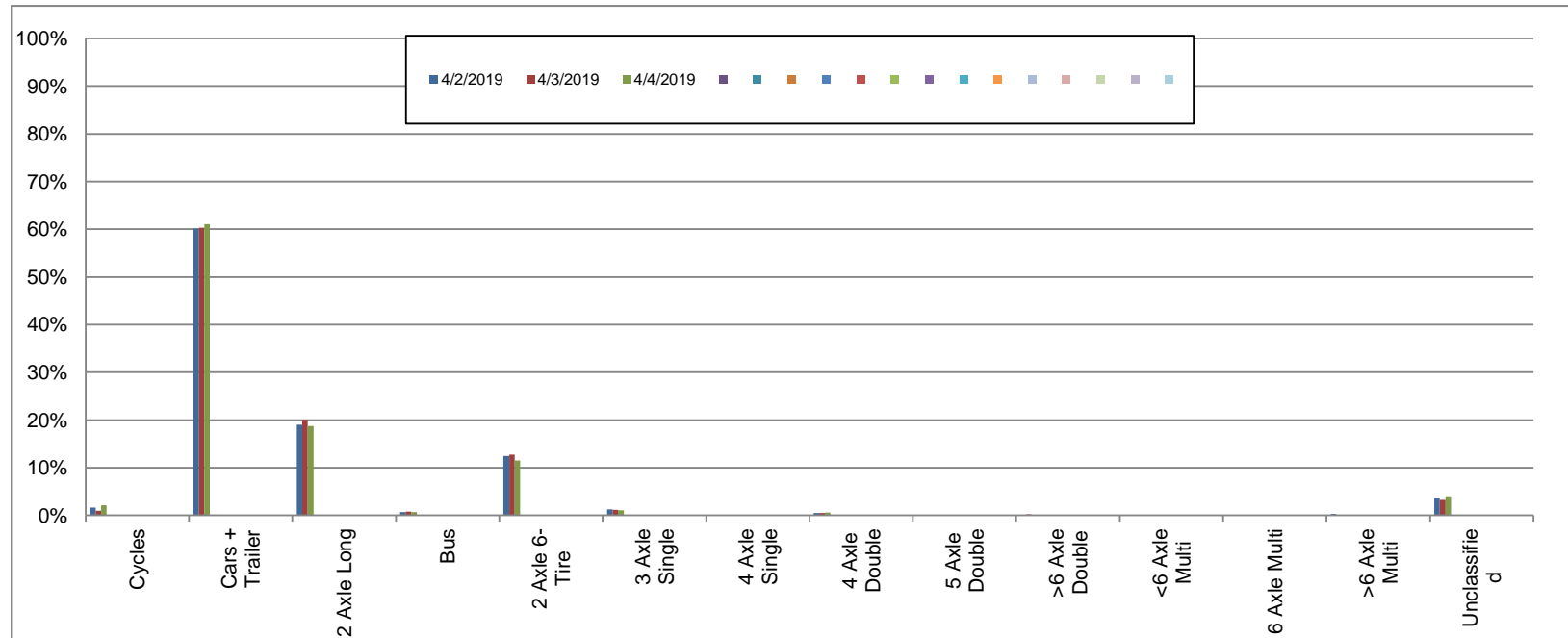
Southbound

April 2, 2019 to April 4, 2019

Daily Class Bin Percentages															Daily Class Bin Volumes											Total Volume			
Bin #	1	2	3	4	5	6	7	8	9	10	11	12	13	14	1	2	3	4	5	6	7	8	9	10	11		12	13	14
Bin Class	Cycles	Cars + Trailer	2 Axle Long	Bus	2 Axle 6-Tire	3 Axle Single	4 Axle Single	4 Axle Double	5 Axle Double	>6 Axle Double	<6 Axle Multi	6 Axle Multi	>6 Axle Multi	Unclassified	Cycles	Cars + Trailer	2 Axle Long	Bus	2 Axle 6-Tire	3 Axle Single	4 Axle Single	4 Axle Double	5 Axle Double	>6 Axle Double	<6 Axle Multi	6 Axle Multi	>6 Axle Multi	Unclassified	
4/2/2019	1.7%	60.2%	19.1%	0.7%	12.4%	1.3%	0.1%	0.5%	0.0%	0.1%	0.0%	0.0%	0.3%	3.6%	84	3028	959	35	626	64	6	27	2	5	0	0	17	181	5034
4/3/2019	1.0%	60.3%	20.1%	0.7%	12.8%	1.2%	0.0%	0.5%	0.1%	0.2%	0.0%	0.0%	0.0%	3.3%	48	2934	976	36	621	56	0	23	4	10	0	0	0	159	4867
4/4/2019	2.1%	61.1%	18.7%	0.7%	11.5%	1.1%	0.0%	0.6%	0.0%	0.2%	0.0%	0.0%	0.0%	4.0%	107	3157	966	36	596	57	2	30	2	8	0	0	1	205	5167
Total	1.6%	60.5%	19.3%	0.7%	12.2%	1.2%	0.1%	0.5%	0.1%	0.2%	0.0%	0.0%	0.1%	3.6%	239	9119	2901	107	1843	177	8	80	8	23	0	0	18	545	15068

Class Data Summary

Bin #	1	2	3	4	5	6	7	8	9	10	11	12	13	14	Total Volume
Bin Class	Cycles	Cars + Trailer	2 Axle Long	Bus	2 Axle 6-Tire	3 Axle Single	4 Axle Single	4 Axle Double	5 Axle Double	>6 Axle Double	<6 Axle Multi	6 Axle Multi	>6 Axle Multi	Unclassified	Total Volume
Survey Total	239	9119	2901	107	1843	177	8	80	8	23	0	0	18	545	15068
% Total	1.6%	60.5%	19.3%	0.7%	12.2%	1.2%	0.1%	0.5%	0.1%	0.2%	0.0%	0.0%	0.1%	3.6%	100%
Accumulated %	1.6%	62.1%	81.4%	82.1%	94.3%	95.5%	95.5%	96.1%	96.1%	96.3%	96.3%	96.3%	96.4%	100.0%	
Inv. Accum. %	98.4%	37.9%	18.6%	17.9%	5.7%	4.5%	4.5%	3.9%	3.9%	3.7%	3.7%	3.7%	3.6%	0.0%	



Classification Descriptions

Bin #	Bin Description
1	Motorcycles
2	Passenger cars, including those with recreational trailers
3	2-axle pick-ups, vans, and RVs, including those with recreational trailers
4	Buses
5	2-axle, 6-tire single units
6	3-axle single units
7	4-axle single units
8	3-axle or 4-axle double unit
9	5-axle double unit
10	6-, 7-, or 8-axle double unit
11	5-axle multiple unit
12	6-axle multiple unit
13	7-or-more-axle multiple unit
14	Vehicles that could not be classified

Site notes: